

# INLINE TILE SHELF

## Contents:

### Shelf

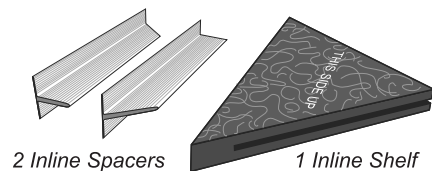
Face 1" x 14.75"

# pre-sloped

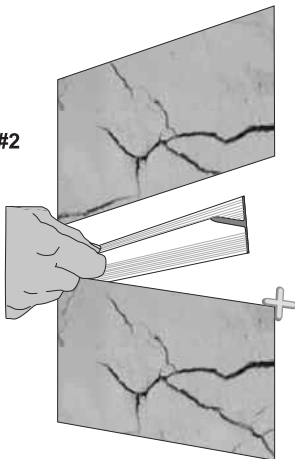
### Bench

Face 1.5" x 24"

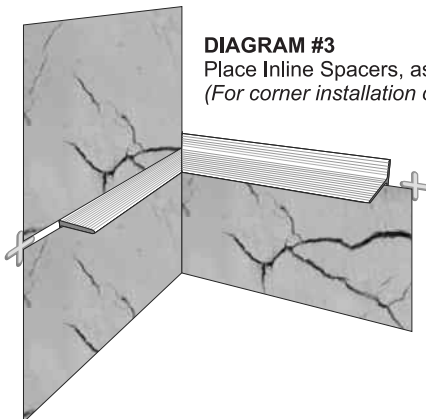
**DIAGRAM #1**  
Parts included for Inline Tile Shelf System.



**DIAGRAM #2**



**DIAGRAM #3**  
Place Inline Spacers, as shown.  
(For corner installation only.)

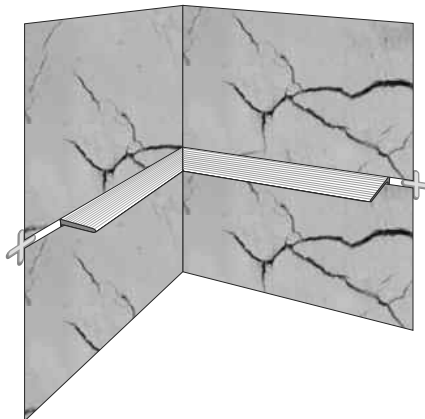


## INSTALLATION INSTRUCTIONS

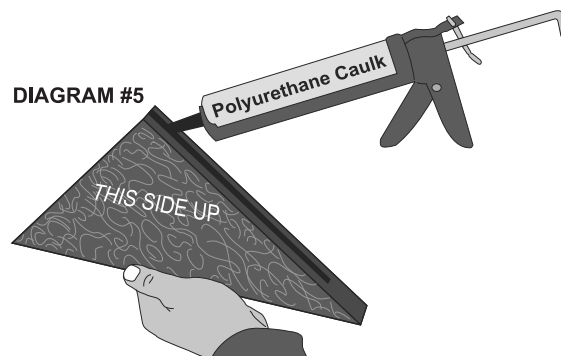
Eazy Company LLC • [www.eazysshelf.com](http://www.eazysshelf.com)

Copyright © 1999-2023 by Eazy Company LLC. All rights reserved.

**DIAGRAM #4**



**DIAGRAM #5**

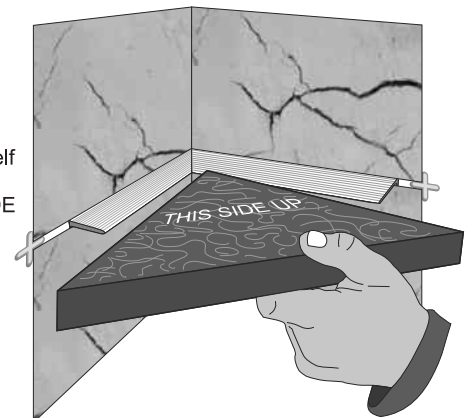


Caulk all connecting surfaces of Inline corner shelf and exposed Inline Spacers.

**DIAGRAM #6**

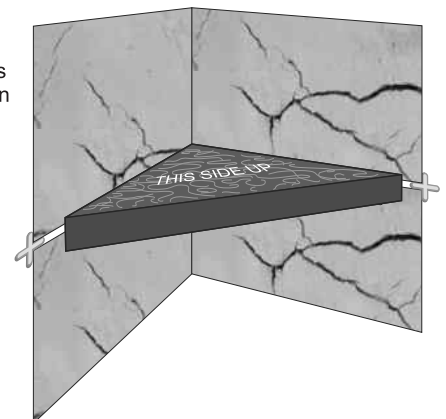
Slide caulked Inline Shelf onto exposed Inline Spacers with "THIS SIDE UP."

*Your Inline Tile Shelf has been engineered to include a slope for drainage the reason for "THIS SIDE UP."*



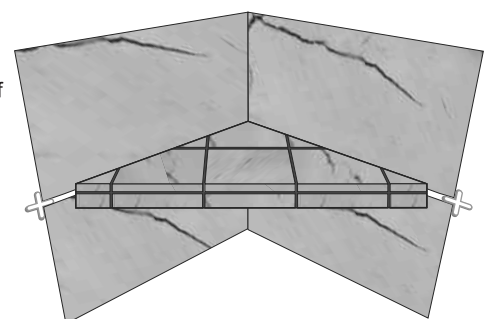
**DIAGRAM #7**

Follow caulk manufacturers recommendations for curing time and clean up.



**DIAGRAM #8**

Set tile on Inline Shelf as desired, using modified thin set.



**Warning:** Fiberglass used in the manufacture of this product. Please use common sense safety practices while handling this material.